

SELF FLARE TUBE FITTINGS

BA3100 SERIES

The BA3100 Series self flare tee shaped adapter is made up of two opposing tube connections and a female pipe thread connection. For the tube connections, the OD and wall thickness of the tubes to be joined to the Self Flare fitting will determine the dash size(s) and whether a BA or BAX version of the Self Flare fitting is required for the application.

Standard Features:

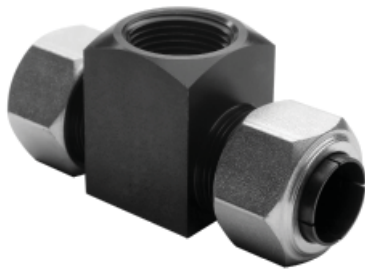
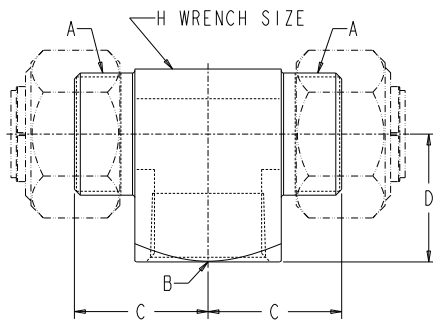
- Tube sizes from -2 (.125 inch) to -32 (2.00 inch)
- Machined from solid steel bar stock - free from brazing, welding and soldering
- BAX3100 adapters available for applications with heavy wall tubing
- Includes swivel tube nuts and Self Flare sleeves

Standard Materials:

- Steel construction
- Black oxide finish on fitting body and tube sleeves
- Zinc plated, steel swivel tube nuts

CAUTION

- System operating conditions and maximum pressures dictate tubing requirements. LDI Self Flare fittings require matching the tube connection on the adapter to the tube wall thickness selected for the application.
- Fully annealed and cleaned tubing is preferred. Consult factory for applications that require alloy tubing or tube wall thicknesses that exceed published limits for BA and BAX tube connections.



BA3100 Series (inches)

Part No.	Tube OD	A	B (NPTF)	C	D	H
BA3100-2	1/8	5/16-24	1/8-27	0.67	0.56	9/16
BA3100-3	3/16	3/8-24	1/8-27	0.67	0.56	9/16
BA3100-4	1/4	1/2-20	1/8-27	0.73	0.56	9/16
BA3100-5	5/16	9/16-18	1/8-27	0.80	0.56	9/16
BA3100-6	3/8	5/8-18	1/4-18	0.86	0.72	3/4
BA3100-8	1/2	3/4-16	3/8-18	0.95	0.84	7/8
BA3100-10	5/8	7/8-16	1/2-14	1.08	1.03	1 1/8
BA3100-12	3/4	1 1/16-16	3/4-14	1.15	1.09	1 1/4
BA3100-14	7/8	1 3/16-16	3/4-14	1.13	1.13	1 1/4
BA3100-16	1	1 5/16-16	1-11 1/2	1.44	1.38	1 3/4
BA3100-20	1 1/4	1 5/8-16	1 1/4-11 1/2	1.75	1.69	2
BA3100-24	1 1/2	1 15/16-16	1 1/2-11 1/2	2.00	2.06	2 1/2
BA3100-32	2	2 1/2-12	2-11 1/2	2.25	2.38	3

Dimensions and specifications are subject to change without notice. Not all items are Made-To-Stock, contact us for availability.

02/14

Ph : 920-682-6877
Fx : 920-684-7210

LDI Industries

sales@ldi-industries.com
www.ldi-industries.com

Pg SF-15